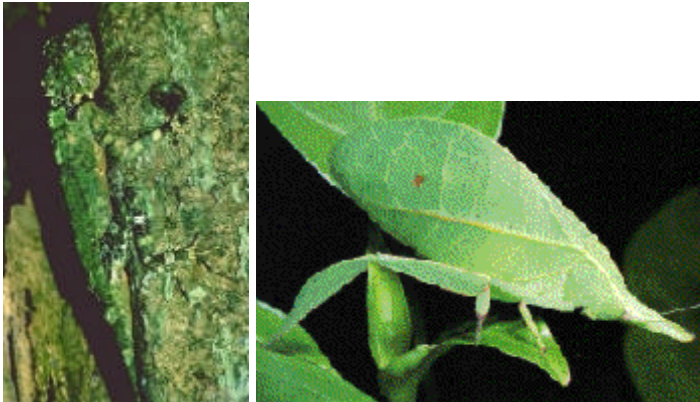


1. Find the animal. What is this an example of?



2. What is this insect doing? Why? How is this beneficial?



3.

4. The following description is detailing what type of animal behavior? Is this a form of innate or learned behavior?

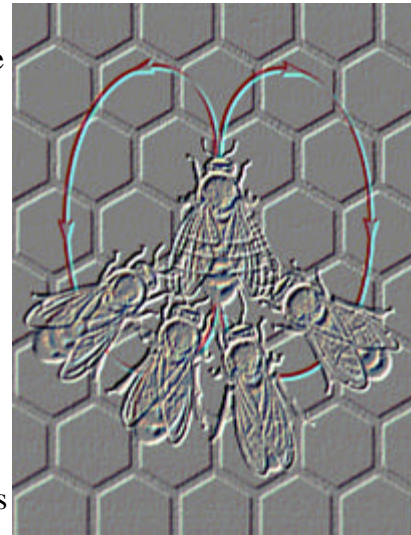
Winter is a time of magic in the animal world. Species as diverse as bears and beetles disappear from the landscape. Most do not travel far. They venture into caves and dens, descend from mountains, burrow deep underground, or simply dig under rocks or logs. During this self-imposed exodus, they may rely on extra fat or cached food. Some curl up alone. Others group together for warmth. The winter adaptations – practiced by reptiles, invertebrates, amphibians, mammals and birds. This helps animals cheat winter's potential death grip and prolong their lives.

5. The following description is detailing what type of animal behavior? Is this a form of innate or learned behavior?

WAGGLE "DANCE"

Scout bee or recruit locates a rich flower patch, imbibes some nectar and flies home. She crawls onto the vertical combs near the nest entrance and dances for up to several minutes. The dance amidst closely packed adjacent bees consists of running through a small figure eight pattern repeatedly.

Here a straight run followed by a turn to the right to circle back to the starting point, another straight run, followed by a turn and circle to the left, and so on in a regular alternation between right and left turns after straight runs constitutes the dance. The informative portion of the dance is the straight run where the dancer vigorously vibrates (waggles) her abdomen back and forth laterally and emits strong substrate and airborne vibrations in addition to audible (to humans) buzzes. This buzzing is produced by the flight muscles and has a frequency range between 200 - 300 cycles per second. A new recruit may attend several dances before she leaves the colony to locate the food. The direction and duration of straight runs are closely correlated with the direction and distance of the flower patch advertised by the dancing bee.



6. Find the animal? What type of animal is this? What is this an example of?



7. The following description is detailing what type of animal behavior? Is this a form of innate or learned behavior?

A dormant state involving vastly lowered metabolism, which certain animals enter in order to survive hot weather.