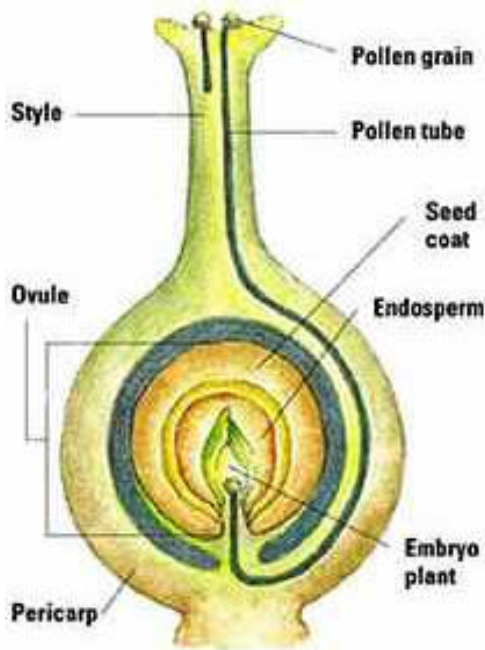


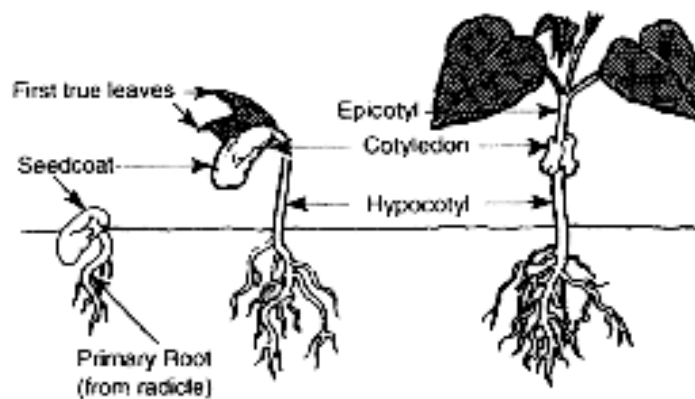
1. This is a diagram of what process?



2. An embryo plant and cotyledon are found inside a seed. What is the purpose of the cotyledon?

3. **Seed:** a fertilized ovule.

- A **seed coat** forms from the ovule wall to protect the seed.
- The _____ is formed by the combination of the second sperm and the polar bodies.
- The root of the embryonic plant in the seed is know as the **radicle**.
- The _____ will form the stem of the new plant.
- The leaves of the embryonic plant are collectively called the _____.



4. Use the following words to complete the diagram: **Petal, Sepal, Pistil, Stamen, Style, Anther, Ovary, Filament, Ovule, Base/ Stem, Stigma.**

